



Statum Wootton Mount, Bournemouth, Dorset BH1 1PJ
£225,000 Share of Freehold



**** VIEWINGS BY APPOINTMENT MONDAY 13TH PM** A RECENTLY CONSTRUCTED ONE BEDROOM APARTMENT situated in the heart of BOURNEMOUTH TOWN CENTRE with PARKING. The property boasts SPACIOUS OPEN PLAN LIVING AREA and a SOUTH FACING BALCONY.**

- ONE BEDROOM APARTMENT
- SOUTH FACING BALCONY
- FIFTH FLOOR APARTMENT
- LIFT TO ALL FLOORS
- PARKING
- REMAINDER OF 125 YEAR LEASE

Location:

Statum, Woodland Point is just a short walk into the heart of Bournemouth town centre with its excellent local shops, bars, restaurants, theatres, cinemas and of course the 7 miles golden sandy beaches. Less than half a mile away is the main line railway station to London, Waterloo and the national coach depot.

Maintenance Details

Tenure: Leasehold, 123 years remaining

Ground Rent: £175 PA

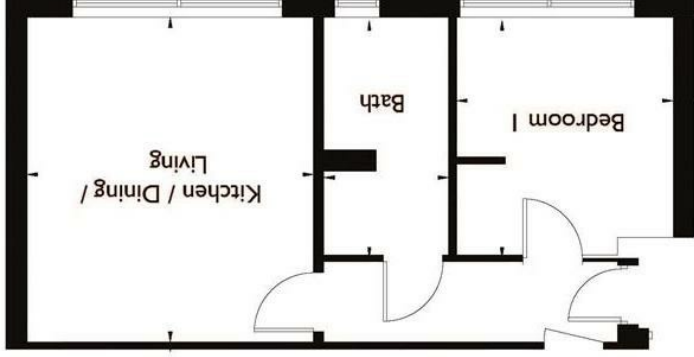
Maintenance: £746 PA



FLOOR PLAN

APARTMENTS 5, 11, 17, 23, 29, 35

Principle rooms
 Bedroom 1 - 3.44 x 3.09, 11'3" x 10'2"
 Kitchen / Living / Dining Room - 4.64 x 4.11, 15'3" x 13'6"
 Bath - 3.41 x 1.78, 11'2" x 5'10"



All room dimensions given above are approximate measurements

These particulars are intended only to give a brief description of the property as a guide to prospective buyers. Accordingly:
 • Their accuracy is not guaranteed and neither Key Drummond Estate Agents, nor the vendors accept any liability in respect of their contents.
 • They do not constitute an offer of contract for sale.
 • Any prospective purchasers should satisfy themselves by inspection or otherwise as to the correctness of any statements or information in these particulars. Please refer to the Agents if you require further clarification or information.

The Agent has not tested any apparatus, equipment, fixtures and fittings or services and so cannot verify that they are in working order or fit for the purpose. A buyer is advised to obtain verification from their Solicitor or Surveyor.

References to the Tenure of a Property are based on information supplied by the Seller. The Agent has not had sight of the title documents. A Buyer is advised to obtain verification from their Solicitor.

Energy Efficiency Rating	
Very energy efficient - lower running costs	A
Energy efficient - lower running costs	B
Decent energy efficiency	C
Some energy efficiency	D
Low energy efficiency	E
Very low energy efficiency	F
Lowest energy efficiency	G

Environmental Impact (CO ₂) Rating	
Very low environmental impact - lower CO ₂ emissions	A
Low environmental impact	B
Decent environmental impact	C
Some environmental impact	D
High environmental impact	E
Very high environmental impact	F
Lowest environmental impact	G